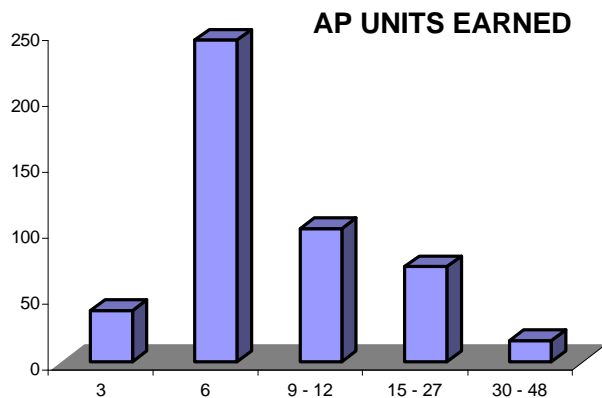


MISCELLANY

The average high school GPA of these freshmen was 3.18

307 of the new freshmen are already planning to acquire a teaching credential. About 45% of these are looking forward to becoming elementary school teachers, with the rest planning to teach in high school, or undecided.

There are 68 new President's Scholars among the freshmen.



472 of the freshmen received Advanced Placement credit. The amount received ranged from 3 to 48 units (see table above). Over half of these students earned 6 units, while 18% were credited with more than 12 units.

CALIFORNIA STATE UNIVERSITY



LONG BEACH

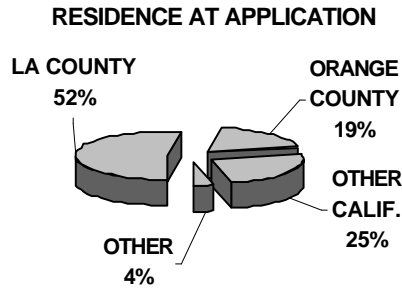
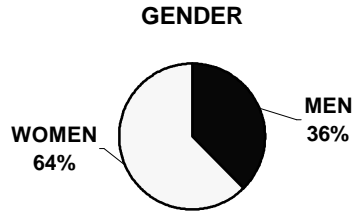


FALL 2000 First-Time Freshmen

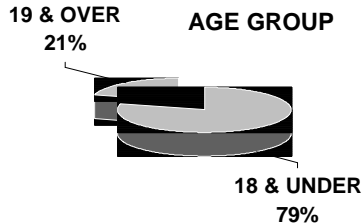
A PROFILE OF 3,367 NEW STUDENTS

DEMOGRAPHICS

ETHNICITY	NO.	PCT
AMERIND/ALASKAN	20	0.6%
AFRICAN-AMERICAN	257	7.6%
MEXICAN-AMERICAN	592	17.6%
CENTRAL AMERICAN	62	1.8%
SOUTH AMERICAN	25	0.7%
OTHER LATINO	114	3.4%
FILIPINO	213	6.3%
PACIFIC ISLANDER	23	0.7%
CHINESE	71	2.1%
JAPANESE	54	1.6%
KOREAN	72	2.1%
CAMBODIAN	87	2.6%
VIETNAMESE	106	3.1%
OTHER SE ASIAN	13	0.4%
OTHER ASIAN	32	1.0%
WHITE NON-LATINO	1119	33.2%
OTHER	102	3.0%
DECLINE TO STATE	73	2.2%
NO RESPONSE	238	7.1%
F & J VISA	79	2.3%
OTHER NON-CITIZEN	15	0.4%
ALL STUDENTS	3367	100.0%

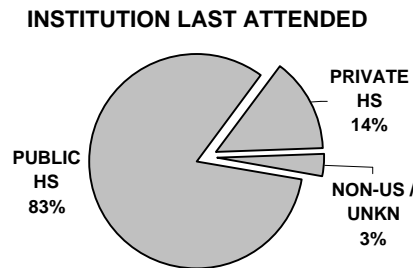
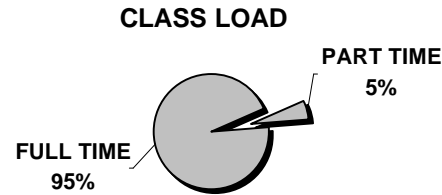
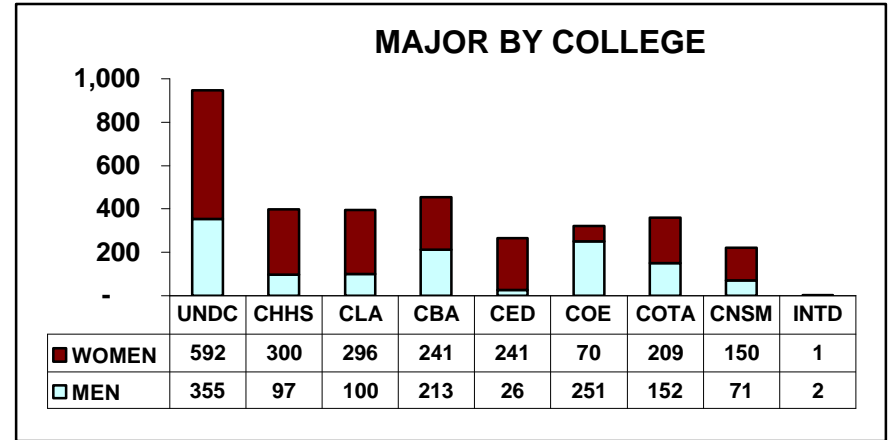


CITIZENSHIP	NO.	PCT.
UNITED STATES	3039	90.3%
MEXICO	43	1.3%
SOUTH KOREA	38	1.1%
PHILIPPINES	37	1.1%
VIETNAM	31	0.9%
THAILAND	22	0.9%
JAPAN	20	0.6%
ALL OTHERS	137	4.1%
ALL STUDENTS	3367	100.0%



The 'White Non-Latino' ethnic group (33.2%) is followed by all Latino groups combined (24.5%) and then all Asians combined (12.9%). All of the most frequent countries of non-U.S.-citizens are on the Pacific Rim. Over half the students lived in Los Angeles County and almost 1/5 in Orange County when they applied. Almost 2/3 of freshmen are women.

ACADEMICS



MOST POPULAR MAJORS	NO.	PCT
UNDECLARED	947	28.1%
BUSINESS ADMIN.	423	12.6%
LIBERAL STUDIES	267	7.9%
PSYCHOLOGY	173	5.1%
NURSING	164	4.9%
BIOLOGICAL SCI.	160	4.8%
COMPUTER SCIENCE	119	3.5%
ART	115	3.4%
FILM/ELECT. ARTS	91	2.7%
CRIMINAL JUSTICE	88	2.6%
MUSIC	62	1.8%
ALL OTHERS	758	22.5%

At almost 2/3 of the freshmen population overall, women comprise more than 2/3 of freshmen majors in the colleges of Health & Human Services, Liberal Arts, and Education, but less than 2/3 in the colleges of Business Administration, The Arts, and especially Engineering, still overwhelmingly male. Over 95% of new freshmen are full-time (12 units +). Over 80% came from California public high schools.